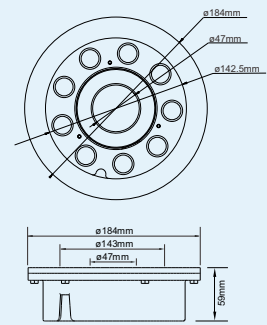


Product Size



Specification

Model No.:	RS-FT27W316X-B(88135)
Front cover & Housing:	Stainless steel 316L
Dimensions:	D184*H59mm (Nozzle hole size: 47mm)
Tempered Glass:	10mm thickness
LED chip:	CREE / EDISON
LED Q'ty:	9pcs 3W LED / 9pcs 3in1 LED / 9pcs 4in1 LED
Cable gland:	Stainless steel 316L PG13.5
Driver:	Constant current driver
Lens:	Clear, Bead, Frosted
Beam Angle Options:	10° 20° 30° 45° 60° 90°
Power Cable:	AWG 5/18 or AWG 3/18 SOW rubber cable
Protection Class:	IP68
Environment:	Dry / Submerged
Mounting Hardware:	Surface Mounted System / Nozzle fixed
Net Weight:	4.5kgs with 1.5m cable
Lifetime:	>50000H

Order information

Item code	Color	Light source(w)	Line Way	Input Voltage (v)	Operating current (mA)	Consumption (w)	Luminous (lm)
88135.093.01	2700-3000K	9*3	V+/V-	AC/DC12-24	2250 / 1125	27	1260
88135.093.02	4000-4500K	9*3	V+/V-	AC/DC12-24	2250 / 1125	27	1332
88135.093.03	5000-5500K	9*3	V+/V-	AC/DC12-24	2250 / 1125	27	1395
88135.093.04	6000-6500K	9*3	V+/V-	AC/DC12-24	2250 / 1125	27	1395
88135.093.05	Red	9*3	V+/V-	AC/DC12-24	1500 / 750	18	315
88135.093.06	Green	9*3	V+/V-	AC/DC12-24	2250 / 1125	27	810
88135.093.07	Blue	9*3	V+/V-	AC/DC12-24	2250 / 1125	27	360
88135.093.08	Yellow	9*3	V+/V-	AC/DC12-24	2250 / 1125	27	855
88135.093.09	RGB-DMX512 (3 channel)	9*3	V+/V- /D+/D-/GND	AC/DC12-24	R: 500 / 250 B: 750 / 375 G: 750 / 375	R: 6 B: 9 G: 9	R: 105 B: 120 G: 270
88135.093.10	Auto changing color	9*3	V+/V-	AC12-24	R: 500 / 250 B: 750 / 375 G: 750 / 375	R: 6 B: 9 G: 9	R: 105 B: 120 G: 270
88135.093.12	RGBV+ (build-in CC driver)	9*3	R/G/B/V+	DC12-24	R: 500 / 250 B: 750 / 375 G: 750 / 375	R: 6 B: 9 G: 9	R: 105 B: 120 G: 270
88135.093.13	RGB-DMX512 (3 channel)	9*3in1	V+/V- /D+/D-/GND	AC/DC24	R: 500 / 250 B: 750 / 375 G: 750 / 375	R: 9 B: 9 G: 9	R: 225 B: 270 G: 540
88135.094.14	RGBW-DMX512 (4 channel)	9*4in1	V+/V- /D+/D-/GND	AC/DC24	R: 375 B: 375 G: 375 W: 375	R: 9 B: 9 G: 9 W: 9	R: 225 B: 270 G: 540 W: 810

